

CELEBRATIONS
AT COOEE

cooeperth.com
171-173 Mounts Bay Rd, Perth WA 6000

Cooee

Cooee Exclusive

An intimate venue designed for 70 guests for a sit-down event or up to 100 for a canapé-style gathering.

Cooee can be made exclusive to your next private event over lunch or dinner.



LUNCH

☀ SEASON	🪑 SEATED	🍷 STANDING	💰 MIN SPEND	💰 VENUE HIRE	👁 PRIVACY
December to January	70*	100	Monday-Thursday \$16,000 Friday-Saturday \$20,000	\$3,000 access from 3pm \$6,000 access from midday	Exclusive
February to November	70*	100	Monday-Thursday \$12,500 Friday-Saturday \$15,000	\$2,500 access from 3pm \$5,000 access from midday	Exclusive

DINNER

☀ SEASON	🪑 SEATED	🍷 STANDING	💰 MIN SPEND	💰 VENUE HIRE	👁 PRIVACY
December	70*	100	Friday-Sunday \$30,000	\$3,000 access from 3pm \$6,000 access from midday	Exclusive
December to January	70*	100	Monday-Thursday \$20,000	\$3,000 access from 3pm \$6,000 access from midday	Exclusive
February to November	70*	100	Monday-Thursday \$15,000	\$2,500 access from 3pm \$5,000 access from midday	Exclusive
November, January to October**	70*	100	Friday-Sunday \$20,000	\$3,000 access from 3pm \$6,000 access from midday	Exclusive

Please note: All lunch events at Cooee must conclude by 4:30pm, and evening events by 11:30pm. Due to noise restrictions bifold doors must be closed by 9pm. Trading Permit permission applicable.






*Can be extended to 80 if using high tables

**Easter long weekend = \$25,000

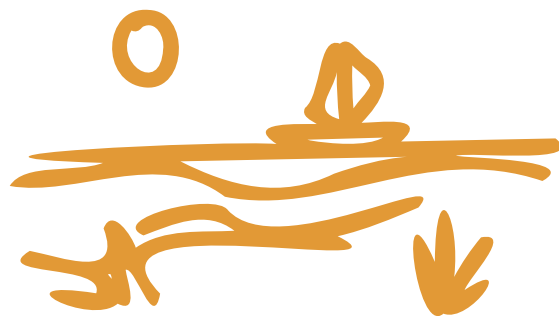
Cooee Riverside Terrace

Embracing lush greenery and breathtaking views of the Perth skyline, our terrace experience combines the intimacy of Mounts Bay Terrace with the sweeping panoramas of the river. This semi-private outdoor space captures the essence of our riverfront location.

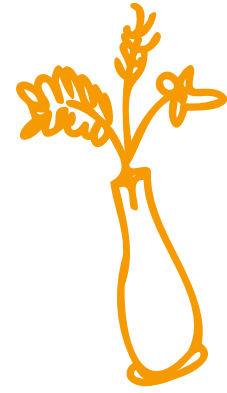
By day, guests can enjoy the glistening Swan River, while by night the warm city lights and gentle festoon lighting create a relaxed and inviting atmosphere for long lunches and dinners.

 SEATED	 STANDING	 MIN SPEND	 VENUE HIRE	 PRIVACY
50	50	\$5,000	\$1,000*	Semi-private, outdoors

Please note: All lunch events at Cooee must conclude by 4:30pm, and evening events by 11:30pm. Due to noise restrictions bifold doors must be closed by 9pm. AV is not permitted. Extended Trading Permit is required for a cocktail style



Cooee Next Door Exclusive



Cooee Next Door is a dedicated function space beside the main restaurant. The space is perfect for events of up to 150 guests* with the option to take over the entire venue for complete privacy.

CORPORATE EVENTS

Theatre, Boardroom or Classroom Setting.

Design your food and beverage package with our corporate catering packages, or the Cooee restaurant event menu.

AV hire is available and includes one wireless microphone, speakers, a projector and two screens with Bluetooth capabilities, and an internet connection.

\$750 Minimum venue hire fee for a 5 hour session + \$150 per hour after

VENUE HIRE	\$1,000
ASSISTED SET UP	\$110p/h
AV HIRE	\$250
CLEANING & SECURITY FEE	\$450

PRIVATE EVENTS

Cocktail or Banquet Setting.

Design your food and beverage package from the Cooee restaurant event menu.

Minimum spend: please reach out to the events team as minimum spend depends on group size.

VENUE HIRE	\$1,200
CLEANING & SECURITY FEE	\$450
CAPACITY	From 30 PAX



Please note: All lunch events at Cooee must conclude by 4:30pm, and evening events by 11:30pm. Due to noise restrictions bifold doors must be closed by 9pm.

*Standing and cocktail configuration. Please note, additional furniture hire costs may be required to facilitate bespoke set ups.

Cooee Next Door Complete Venue

Enjoy complete privacy with a takeover of the entire Cooee Next Door space for your event. The venue's curtain and internal bi-fold door features to create three distinct rooms for breakout sessions – the choice is yours to make at Cooee Next Door.

CAPACITY

THEATRE	CLASSROOM	BOARDROOM	COCKTAIL	BANQUET
50*	40	40	120	30

Cooee Next Door Kings Park Room

The Kings Park Room is perfect for corporate presentations and boardroom events. Enclosed in our eastern wing, the Kings Park Room is designed to create an intimate space for guests to connect and collaborate.

CAPACITY

THEATRE	CLASSROOM	BOARDROOM	COCKTAIL	BANQUET
50*	40	40	80	30

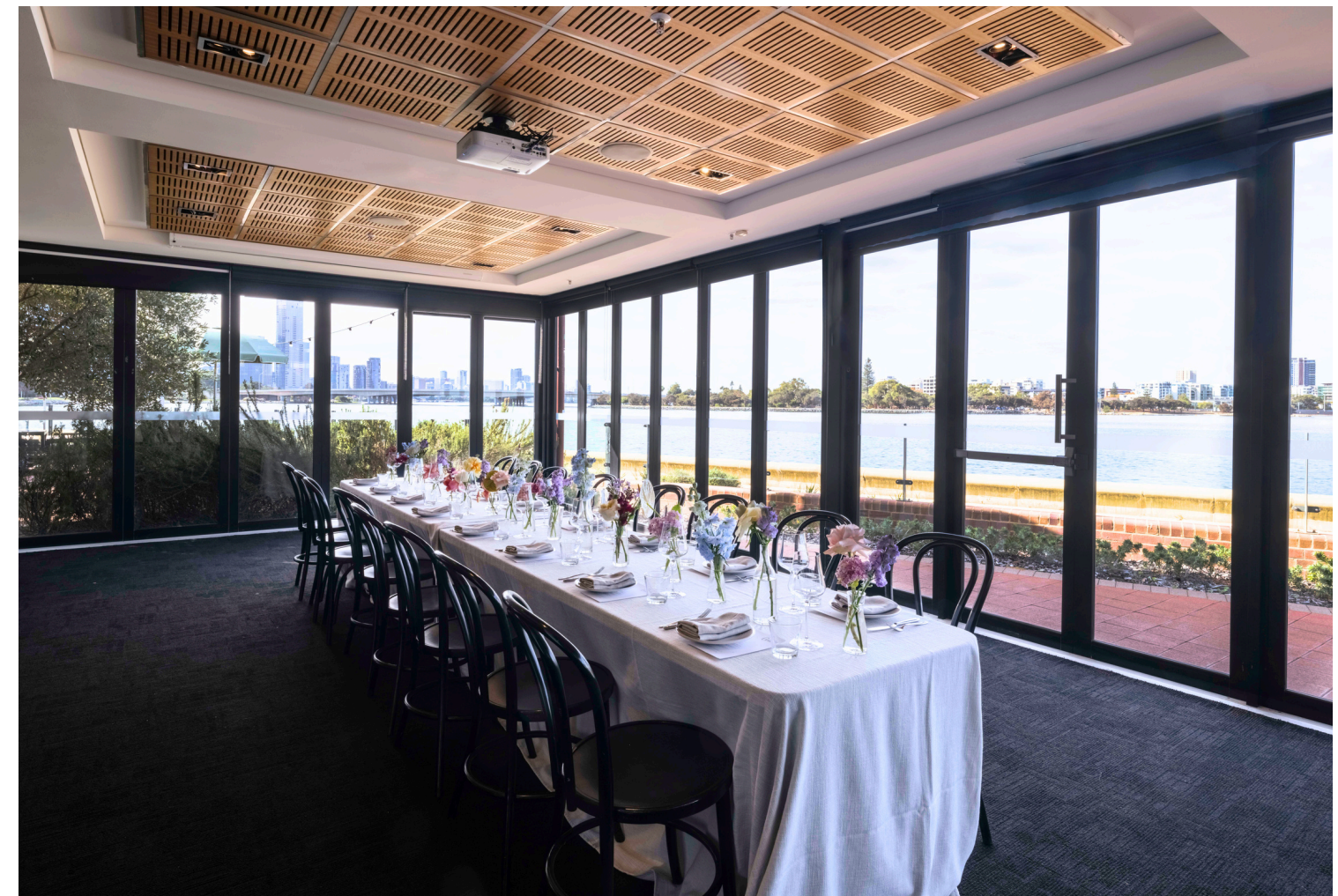
Cooee Next Door River Room

Located in our western wing, the River Room overlooks the picturesque Swan River with direct access to our venue's alfresco. Enjoy the option of splitting the River Room into two with the use of our bi-fold doors.

CAPACITY

THEATRE	CLASSROOM	BOARDROOM	COCKTAIL	BANQUET
30	30	22	75	30

*Capacity can be increased to 80 guests with additional chair hire.
Please note: All lunch events at Cooee must conclude by 4:30pm, and evening events by 11:30pm.
Due to noise restrictions bifold doors must be closed by 8pm.
Contact the events team to arrange a personalised floor plan.





Cooee Next Door Alfresco

Take full advantage of our venue's waterfront location with a combined River Room and Alfresco configuration to increase your event's capacity and offer guests a range of spaces to enjoy.

Please note, due to weather the Alfresco is only available for events between October and April. This space is only available in a cocktail capacity.

Please note: All lunch events at Cooee Next Door must conclude by 4:30pm, and evening events by 11:30pm. Due to noise restrictions bifold doors must be closed by 9pm.

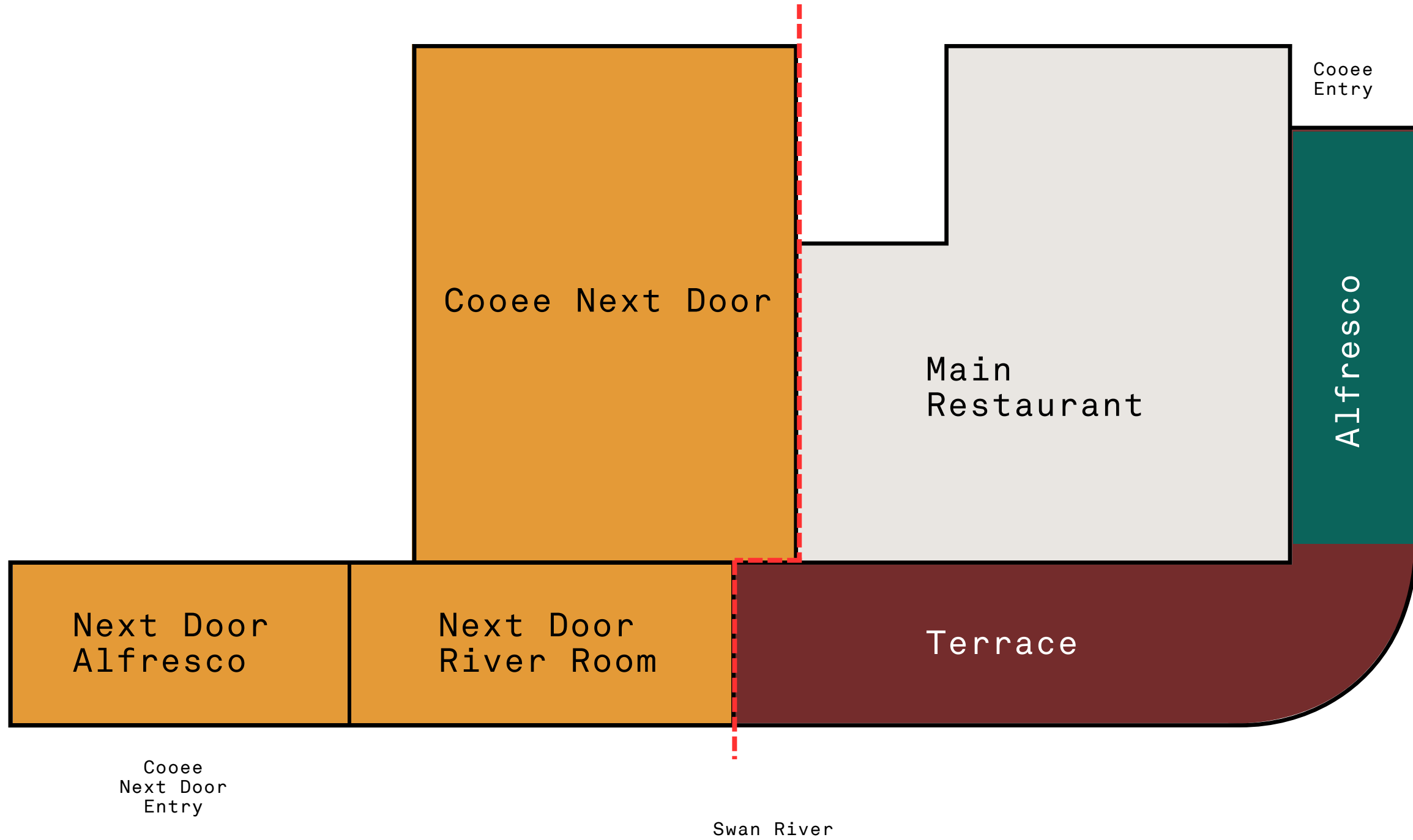
CAPACITY

🍸 COCKTAIL

100



Cooue Spaces



Food Menu

DINING STATIONS

Dining stations of seasonal seafood and charcuterie are available on request.

For more details, contact our events team.

SET MENU

Set Seasonal menu.
Alternate drop.

View our current menu [HERE](#).





Canapé Packages

PACKAGE 1: \$70 PER PERSON

INCLUDES:

- 6 Canapés (between hot and cold)
- 1 Substantial
- 1 Dessert

PACKAGE 2: \$85 PER PERSON

INCLUDES:

- 8 Canapés (between hot and cold)
- 2 Substantial
- 1 Dessert

PACKAGE 3: \$100 PER PERSON

INCLUDES:

- 10 Canapés (between hot and cold)
- 3 Substantial
- 2 Desserts

SAMPLE CANAPE MENU:

COLD CANAPES

Baby cucumber, cashew nut ricotta, finger lime, anise myrtle ^{GF, NF, V, VG}
Crostini, whipped ricotta, pickled beetroot, candied walnut ^V
Freshly shucked oyster, smoked shallot mignonette ^{GF, DF, NF}
Raw Fremantle tuna tostada, guacamole, hot sauce dressing ^{DF, NF}
Beef tartare, sour cream, crispy potato ^{GF, NF}
Kingfish crudo, crème fraiche, black sesame, cassava cracker ^{GF NF}

HOT CANAPES

Cooee spiced lamb sausage roll, tomato ketchup ^{DF, NF}
Tempura prawn, finger lime, lemon aioli ^{DF, NF}
Smoked ham and green pea croquette, green goddess aioli ^{NF}
Saffron and tallegio arancini ^{NF, V}

SUBSTANTIAL

Crispy buttermilk chicken slider, coleslaw, jalapeno, sriracha aioli ^{NF}
Shark bay prawn brioche roll, spiced Marie Rose, lemon, chives ^{DF, NF}
Harvey Beef wagyu slider, tomato relish, pickles, American cheese ^{NF}
Ricotta gnocchi, tomato sugo, castello sauce ^{NF, V}
Risotto green pea, salsa verde, parmesan ^{GF, NF, V}
Slow cooked beef cheek, soft polenta, gremolata ^{GF, NF}

DESSERT

Coconut sorbet, spiced pineapple, ginger, macadamia ^{GF, DF, V, VG}
Baked vanilla cheesecake, rosemary, rhubarb compote ^{NF, V}
Passionfruit curd tartlet, burnt meringue ^{NF, V}
Salted caramel, Valrhona chocolate tart ^{NF, V}
Sesame seed lavosh, gorgonzola dolce, fresh honeycomb ^{NF, V}

CAKEAGE:

Clients may bring their own cake to the event by prior arrangement with Cooee. No external food or beverages are otherwise permitted.
Price: \$6PP for individually plated cake. \$50 for cake served on platter.

Morning Tea

Our morning tea menu offers guests a selection of choices to begin their day. Please note, this is only available at Cooee Next Door.

Available to a minimum of 8 guests, up to 100, choose from a set menu with delicious additions including cold brew coffee and protein balls.

When it comes to lunch, groups of 8 or more also have the option to take advantage of the lunch catering menu, or at Cooee restaurant and receive 10% off first bottle of wine purchased. Bookings subject to availability.

TO SHARE

Select 3 options:

- Banana bread
- Raspberry and coconut slice
- Caramel slice
- Chocolate brownie
- Almond croissant
- Mini Sausage Roll
- Mini Vegetarian quiche

INDIVIDUAL

Tea or Coffee



Lunch Catering

We offer a range of fresh and delicious lunch options to enjoy. Our lunch catering options are served individually for groups of 8 or more guests.

Please note, lunch catering requires notice of at least 3 business days ahead of your event. Only available at Cooee Next Door.

TO SHARE

Lunch (all made fresh to order):

Egg salad

Mayonnaise, chive, iceberg lettuce

Continental baguette

Sliced salami, smoked ham, provolone, tomato and basil

Chicken panini

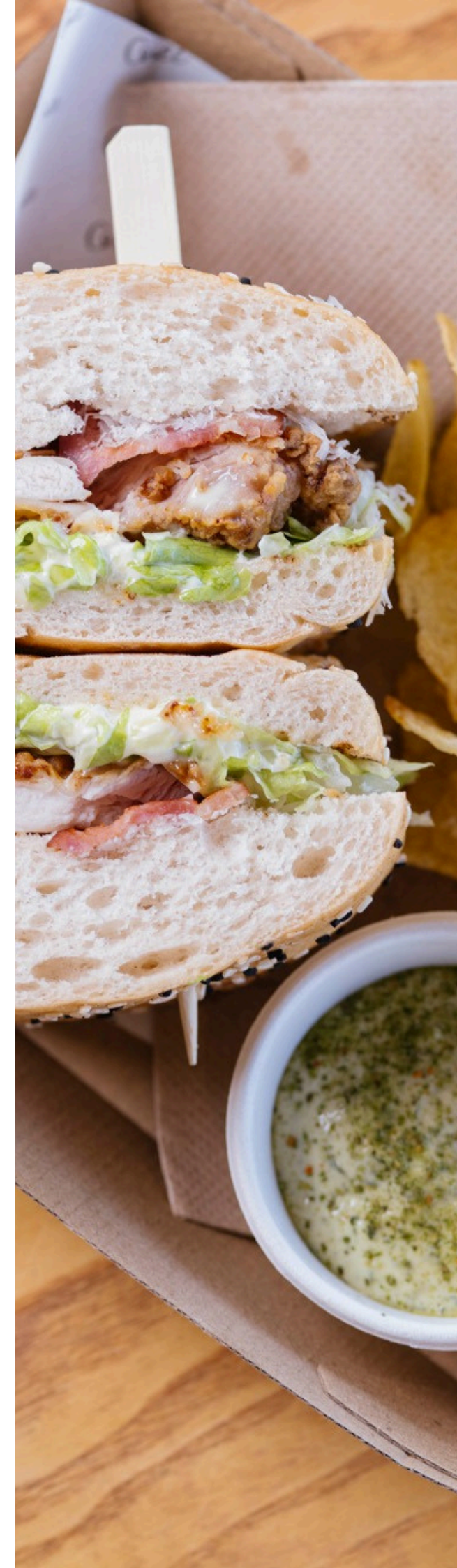
Pesto, tomato, rocket

Steak panini

Caramelised onion aioli, rocket, sliced cheddar

Served with potato crisps and individual salads choice of:

- Roast vegetable, pearl barley, rocket, tahini dressing
- Baby cos lettuce, bacon, parmesan, croutons
- Greek salad, cucumber, red onion, capsicum, basil



Beverage Packages

BANKSIA PREMIUM BAR:
\$ 70 PER PERSON
FOR THE FIRST 2 HOURS
\$30PP PER HOUR AFTER

WESTERN AUSTRALIA BAR:
\$ 90 PER PERSON
FOR THE FIRST 2 HOURS
\$45PP PER HOUR AFTER

BANKSIA PRESTIGE BAR:
\$ 125 PER PERSON
FOR THE FIRST 2 HOURS
\$55PP PER HOUR AFTER

The packages include sparkling, rosé, white and red wine, beers, ciders, house spirits, and non-alcoholic options.

Please speak with the Events Team for more information.

VIEW OUR CURRENT DRINKS MENU [HERE](#).



FAQs

WHAT TIME CAN MY EVENT RUN UNTIL?

- Lunch events: until 4:30 pm
- Dinner events: until 11:30 pm
- Please note: due to noise restrictions, bi-fold doors must be closed by 9pm.

CAN I BRING MY OWN VENDORS?

- Yes, you can bring your own vendors, provided that:
- They are approved in advance by our Events Team.
- They comply with all bump-in and bump-out times agreed in your booking.
- They follow the venue rules, including no nails, adhesives, drilling, or open flames.

CAN I BRING MY OWN CAKE?

- Yes, you are welcome to bring your own cake.
- A cakeage fee applies – please confirm the amount with our Events Team when booking.

REFUNDS & ADJUSTMENTS

- Bar tab: if the full amount is not consumed, the remaining balance is non-refundable.
- Guest count reduction: if guest numbers decrease with less than 10 business days' notice, the agreed amount will still be charged.
- Cancellations: please refer to the official Terms & Conditions for cancellation timeframes and applicable fees.

MENU TASTING

- Exclusive events: a menu tasting is included, featuring your selected food menu and one glass of champagne per person.
- If you'd like to taste the full drinks menu, an additional \$50,00 fee applies.
- Non-exclusive events: tastings are optional and available for \$200 per person (maximum 4 guests).

DECORATIONS

- You are welcome to bring your own decorations, provided that:
- They are approved by the Events Team prior to the event.
- No adhesives, nails, or items that may damage the venue are used.
- Only LED candles or enclosed candles (in glass containers) are permitted – open flames are strictly prohibited.
- Hanging installations are not allowed.

BUMP-IN & BUMP-OUT

- All set-up and pack-down must occur within your booked access period.
- Bump-out must happen immediately after the event concludes.
- If any decorations are left at the venue, an additional cleaning fee will apply. All materials must be removed during bump-out.

NOISE CONTROL (COOEE & CND EXCLUSIVE EVENTS)

- Due to building agreements, bi-fold doors must be closed by 9:00 pm.
- Live musicians or DJs must be set up indoors only – outdoor performances are not permitted.

FOOD & DRINKS MENU

- Our culinary team curates each menu carefully, but we're happy to adjust it to suit your preferences or special requirements.
- Please contact our Events Team to discuss any customisations.
- We are not a BYO venue.

DIETARY REQUIREMENTS

- Our kitchen is able to accommodate all dietary requirements, as long as they are advised at least 10 business days prior to the event.
- Please note: while every care is taken, our kitchen handles allergen products, so trace elements may be present.

Visit Cooee

Cooee Next Door is located in the adjacent building to our renowned restaurant, Cooee.

With ample free parking available for guests, along with a dedicated door front drop off area, Cooee offers the perfect location to host your next event.

KINGS PARK

Entrance to Garra-Katta parking travelling EAST



Limited amount of parking

Entrance to Garra-Katta parking travelling WEST (pass under Mounts Bay Rd)

P

Cooee

Cooee
Next Door

OFFICES

SHARED LOBBY

FORECOURT

FOOTBRIDGE

P

Garra-Katta
Parking

MOUNTS BAY RD EAST
MOUNTS BAY RD WEST

Book your next event at Cooee today

Our experienced team is readily available to help you deliver your next event with us at Cooee.

We also work with a range of local, reliable suppliers who we recommend for bespoke event requests such as linen hire, florals, photography, AV or dancefloor staging.

Connect with our team today to lock in a date.



Cooee